

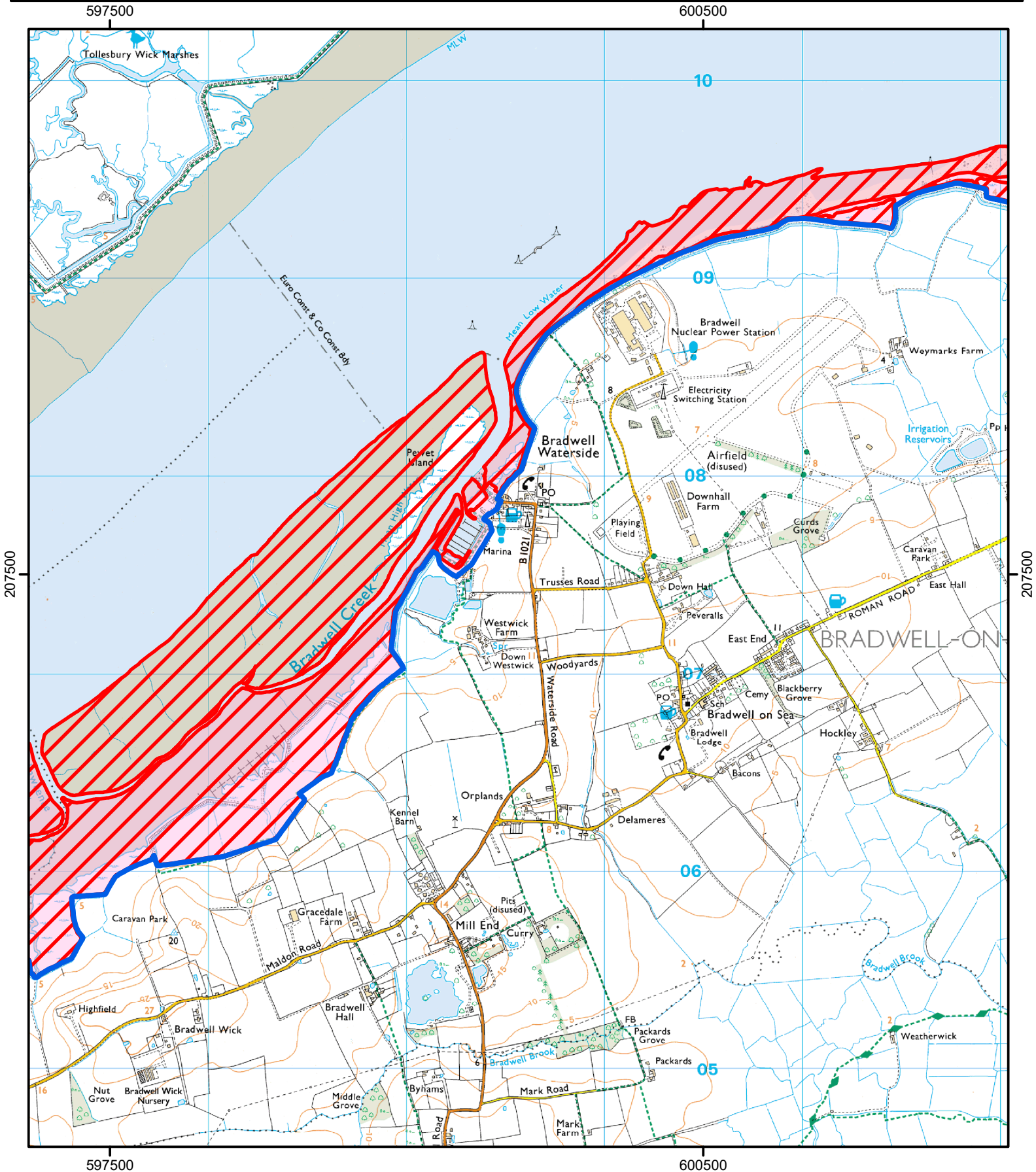
UNSUITABLE FOR PUBLIC ACCESS

The land hatched red on the Coastal Access Land is closed as it is unsuitable for public access

The England Coast Path remains open for public access

This does not affect Public Rights of Way and Permissive Access

Case Number: 2022039578



0 500 1,000 m © Crown Copyright and database right 2022
Ordnance Survey 100022021

For more information call the Open Access Contact Centre
on 0300 060 2091 or visit our website at
www.gov.uk/right-of-way-open-access-land/use-your-right-to-roam

— England Coast Path

 Restricted Coastal Access

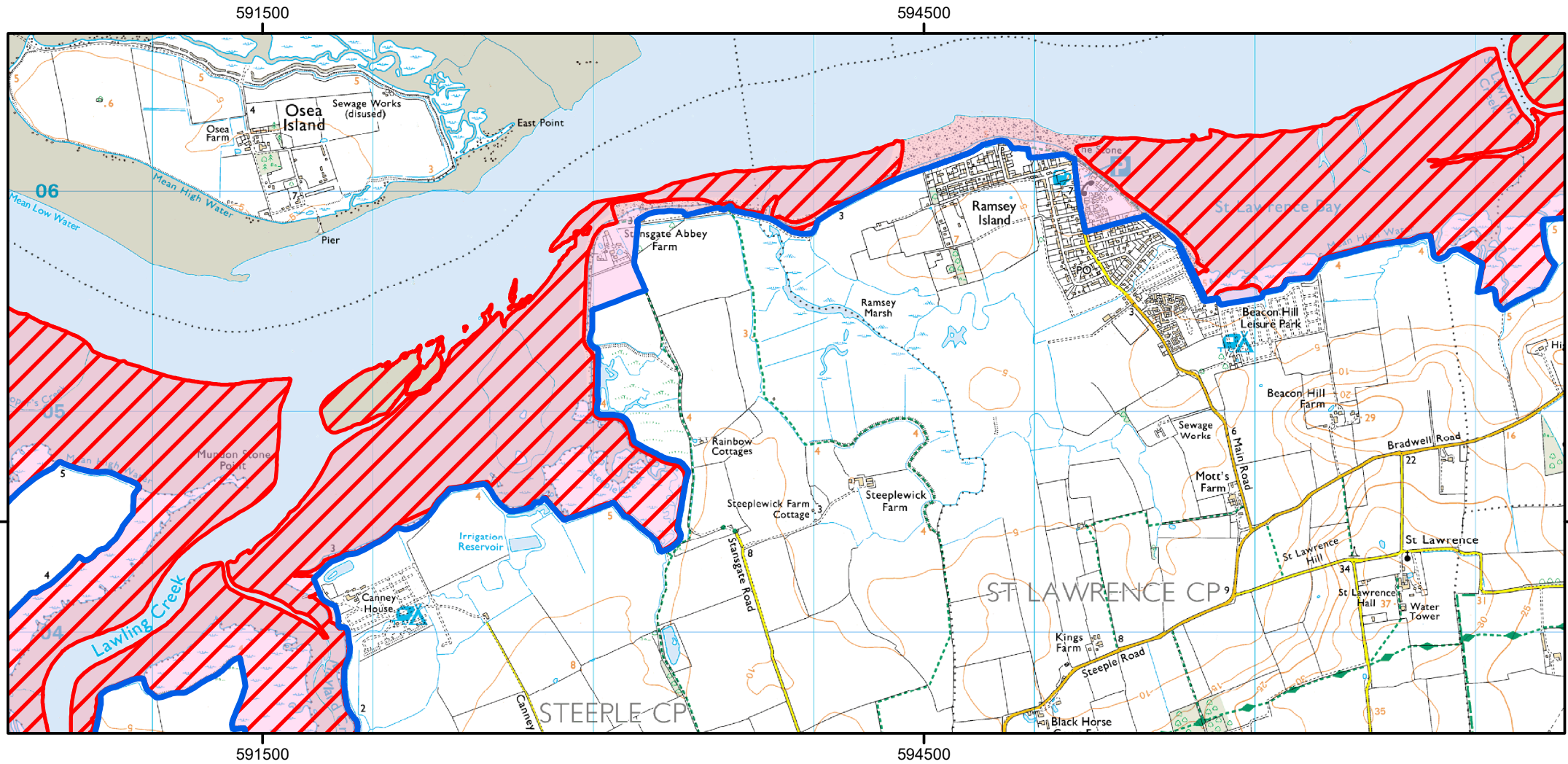
 Coastal Access Land



UNSUITABLE FOR PUBLIC ACCESS

The land hatched red on the Coastal Access Land is closed as it is unsuitable for public access
The England Coast Path remains open for public access
This does not affect Public Rights of Way and Permissive Access

Case Number: 2022039578



0 500 1,000 m

© Crown Copyright and database right 2022
Ordnance Survey 100022021

For more information call the Open Access Contact Centre
on 0300 060 2091 or visit our website at
www.gov.uk/right-of-way-open-access-land/use-your-right-to-roam

— England Coast Path

▨ Restricted Coastal Access

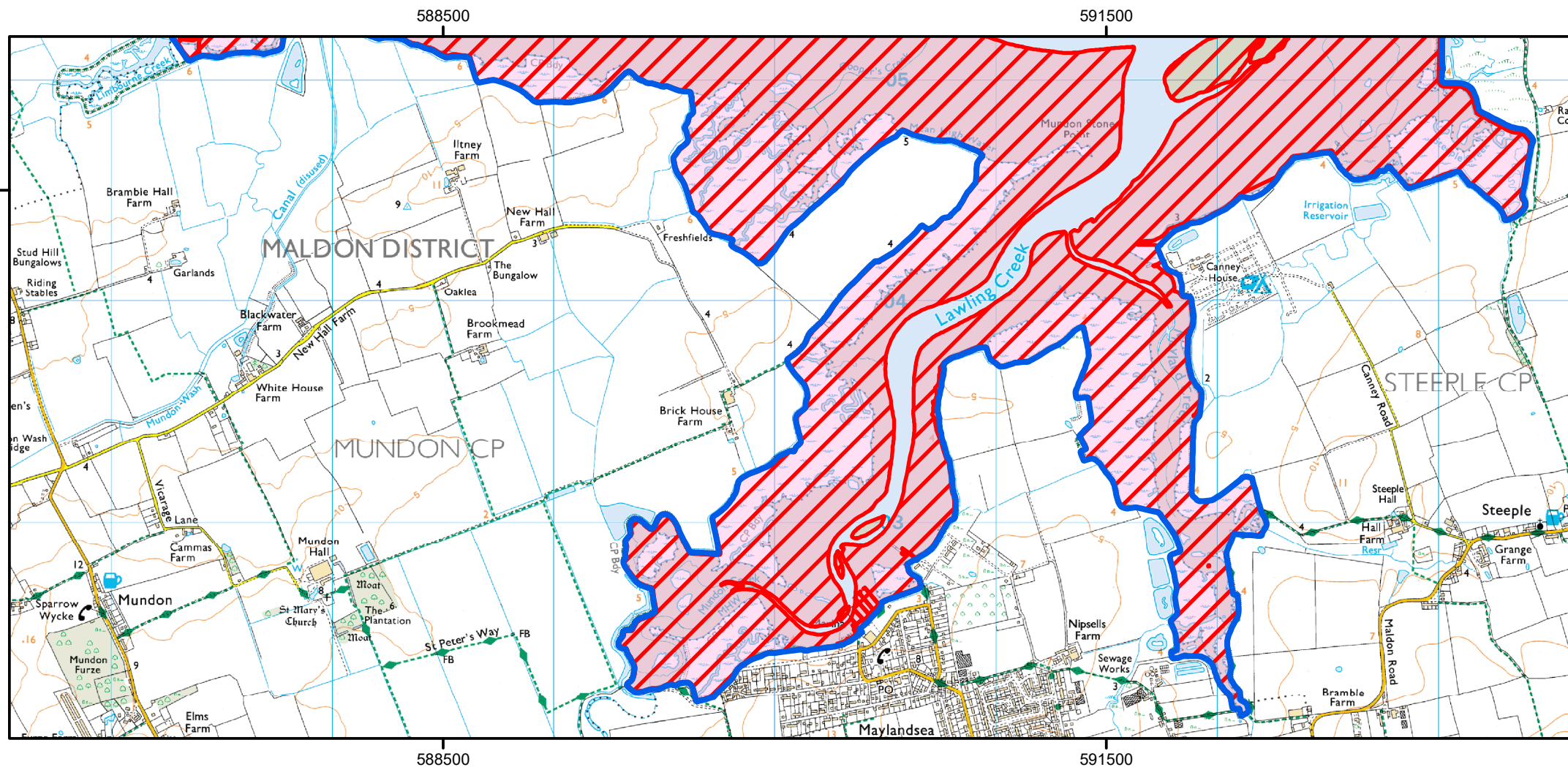
■ Coastal Access Land



UNSUITABLE FOR PUBLIC ACCESS

The land hatched red on the Coastal Access Land is closed as it is unsuitable for public access
The England Coast Path remains open for public access
This does not affect Public Rights of Way and Permissive Access

Case Number: 2022039578



0 500 1,000 m

© Crown Copyright and database right 2022
Ordnance Survey 100022021

For more information call the Open Access Contact Centre
on 0300 060 2091 or visit our website at
www.gov.uk/right-of-way-open-access-land/use-your-right-to-roam

— England Coast Path

▨ Restricted Coastal Access

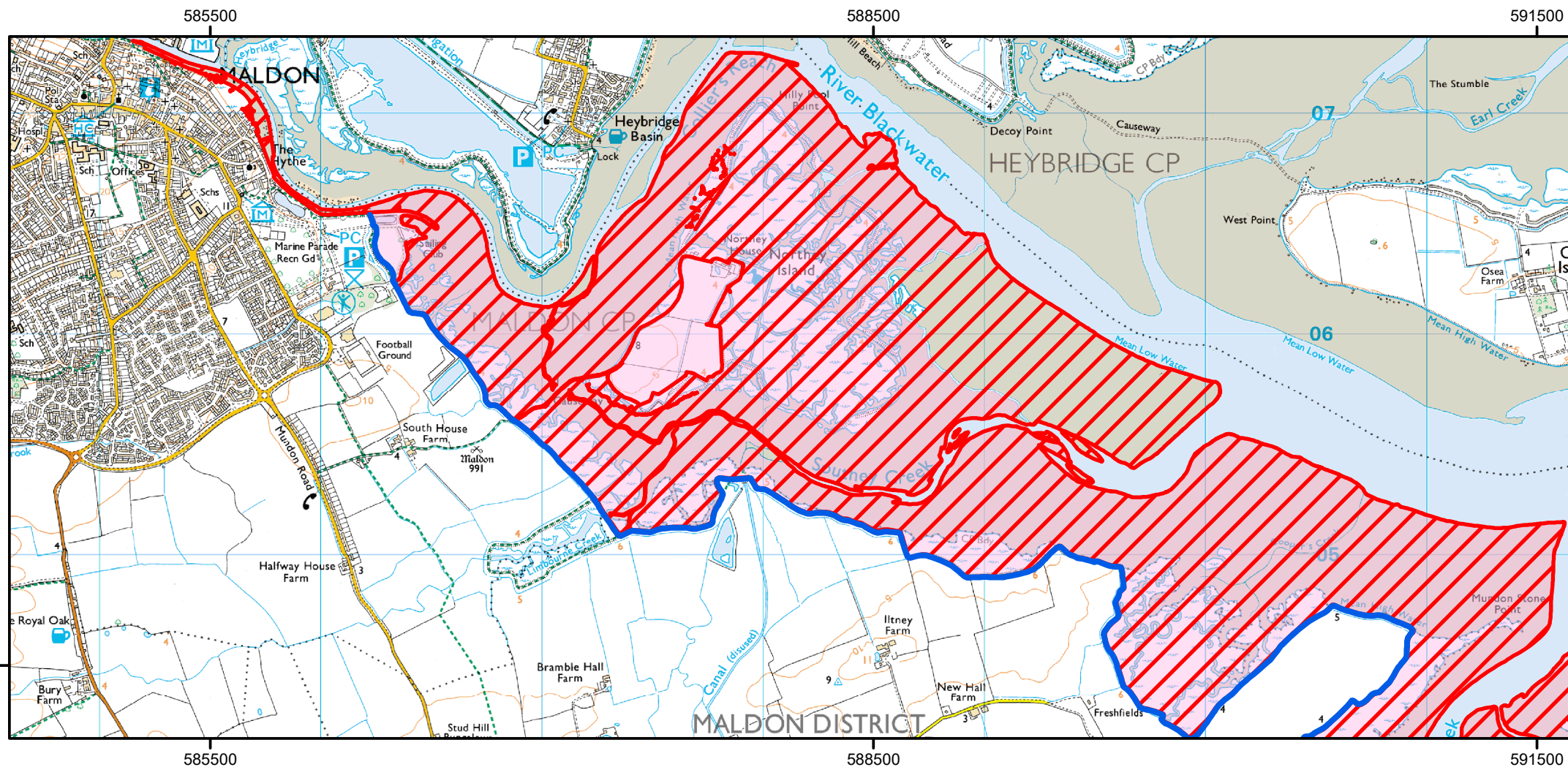
■ Coastal Access Land



UNSUITABLE FOR PUBLIC ACCESS

The land hatched red on the Coastal Access Land is closed as it is unsuitable for public access
The England Coast Path remains open for public access
This does not affect Public Rights of Way and Permissive Access

Case Number: 2022039578



0 500 1,000 m

© Crown Copyright and database right 2022
Ordnance Survey 100022021

For more information call the Open Access Contact Centre
on 0300 060 2091 or visit our website at
www.gov.uk/right-of-way-open-access-land/use-your-right-to-roam

— England Coast Path

 Restricted Coastal Access

 Coastal Access Land

